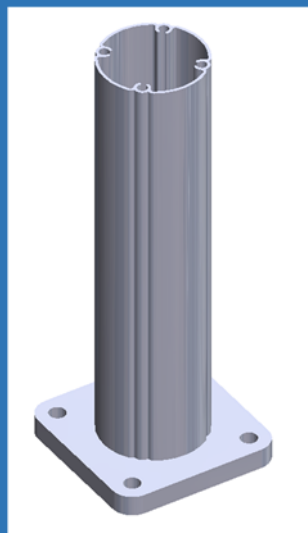


# DECLARATION OF PERFORMANCE

## Optimast 168

PASSIVE SAFE MAST

NO. 001-168-2015.01.22



# Declaration of Performance

No. 001-168-2015.01.22

OPTIMAST 168 passive safe mast Revision C

## Product name

Optimast 168

## Product specifications

The mast is delivered complete with cap and base plate

Tested and approved EN 12767:2007 100, NE, 3

Report and Test no.: 1033700-001 Rev2 L0057  
1033700-002 Rev2 L0058

Product no.: OPTI168X4000 Optimast 168°D X 4000 C/W fitted cap & base plate  
(Stock lengths) OPTI168X5000 Optimast 168°D X 5000 C/W fitted cap & baseplate  
OPTI168X5500 Optimast 168°D X 5500 C/W fitted cap & baseplate

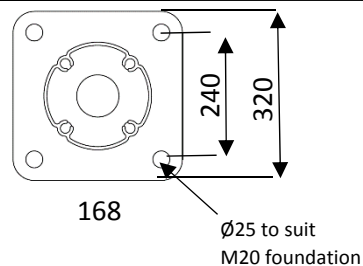
## Material / Surface treatment

Mast: Aluminium 6063 T66, class SP2  
Base plate: Steel S355J2+N, galvanized to ISO 1461  
Bolts: BUMAX 109 (A4 – 316 stainless steel)

## Data / Weight

Mast, Diameter [mm]	Mast, Length max [mm]	Mast, Length min, ground to bottom of sign* [mm]	Min C-C with 1,5m opening at 20° angle [mm]	Bolts base plate/ mast	Mast Weight [kg / m]	Base Plate Thickness [mm]	Base Plate Dimension [mm]	Base Plate Weight [kg]	Bolt patterns for foundation [mm]	Bolts base plate/ foundation
168	5000	1800	1772	M14	5,5	25	320 x 320	17,5	240x240	M20

\*) For an Optimast to be passive safe in accordance to EN 12767 the length from ground level to the bottom of the sign should be minimum 1800mm. The overall length depends on the sign chosen.



# Declaration of Performance

No. 001-168-2015.01.22

OPTIMAST 168 passive safe mast Revision C

# SignPost

SOLUTIONS LTD

Part of  Mallatite

## Capacity

Bending Capacity** $M_{bmax} (M_u)$	Torsion Capacity** $M_{tmax} (T_u)$	Bending Stiffness EI	Torsion Stiffness GI
17,70 kNm	5,80 kNm	359 kNm <sup>2</sup>	62 kNm <sup>2</sup>

\*\*\*) The moments do not take into account the partial material factor ( $\gamma_m$ ). EN 12899-1 gives a  $\gamma_m$  for aluminium of 1,15

## Maintenance

No maintenance required.

## CE marking and system of assessment and verification of constancy of performance

CE marked according to EN 12899-1:2007

Notified body no. 0086

See attached certificate

System of assessment and verification of constancy of performance:

System 1

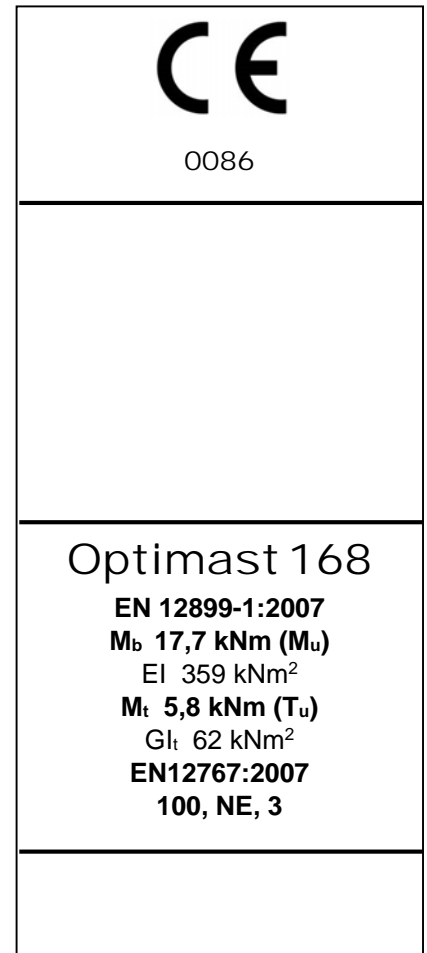
CE marking is approved and valid for minimum 1800mm from ground to bottom of sign to full length of 5500mm;

see Section Data/Weight

The CE label gives all important information on data and capacity. Within the manufacturing process masts and base plates are marked for traceability.

## Referrals

EC Certificate of conformity No. 0086-CPR-572169



# Declaration of Performance

No. 001-168-2015.01.22

OPTIMAST 168 passive safe mast Revision C



Approved by the manufacturer

For Optimast Installation Method please use link below:

<http://www.signfix.co.uk/wp-content/uploads/2014/08/Optimast-Installation-Method-Statement-Issued-August-2017.pdf>

## Revision History

Revision	Reason for Revision	Date
A	Removed installation page & added link to Installation method.	22/09/17
B	Certificate of conformity no. changed	16/10/17
C	Baseplate size amended	06/07/18